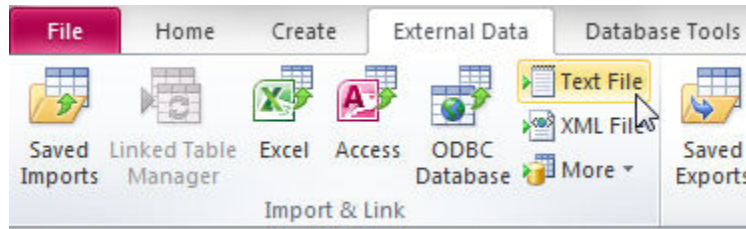
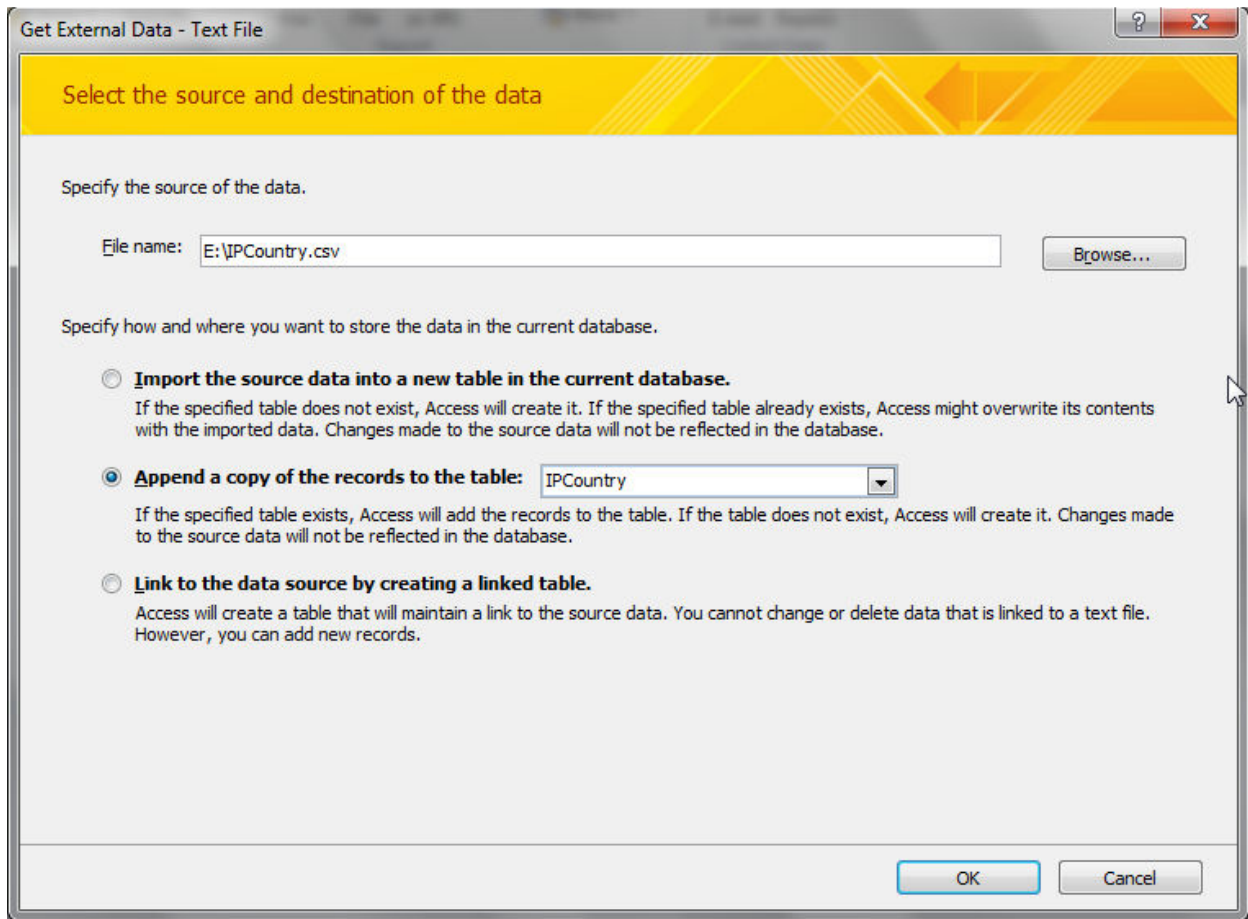


How to import IPCOUNTRY.csv into Microsoft Access Database

1. Open the database (or, create a new database) that you want to import the CSV data.
2. Verify if the **IPCountry** table exists. (If you are creating a new database, you may need to create a new table named as **IPCountry**). Notes: Please refer to **Table Structure** section for details about table design.
3. From the **External Data** tab, select **Text File** option as shown in the screen below.



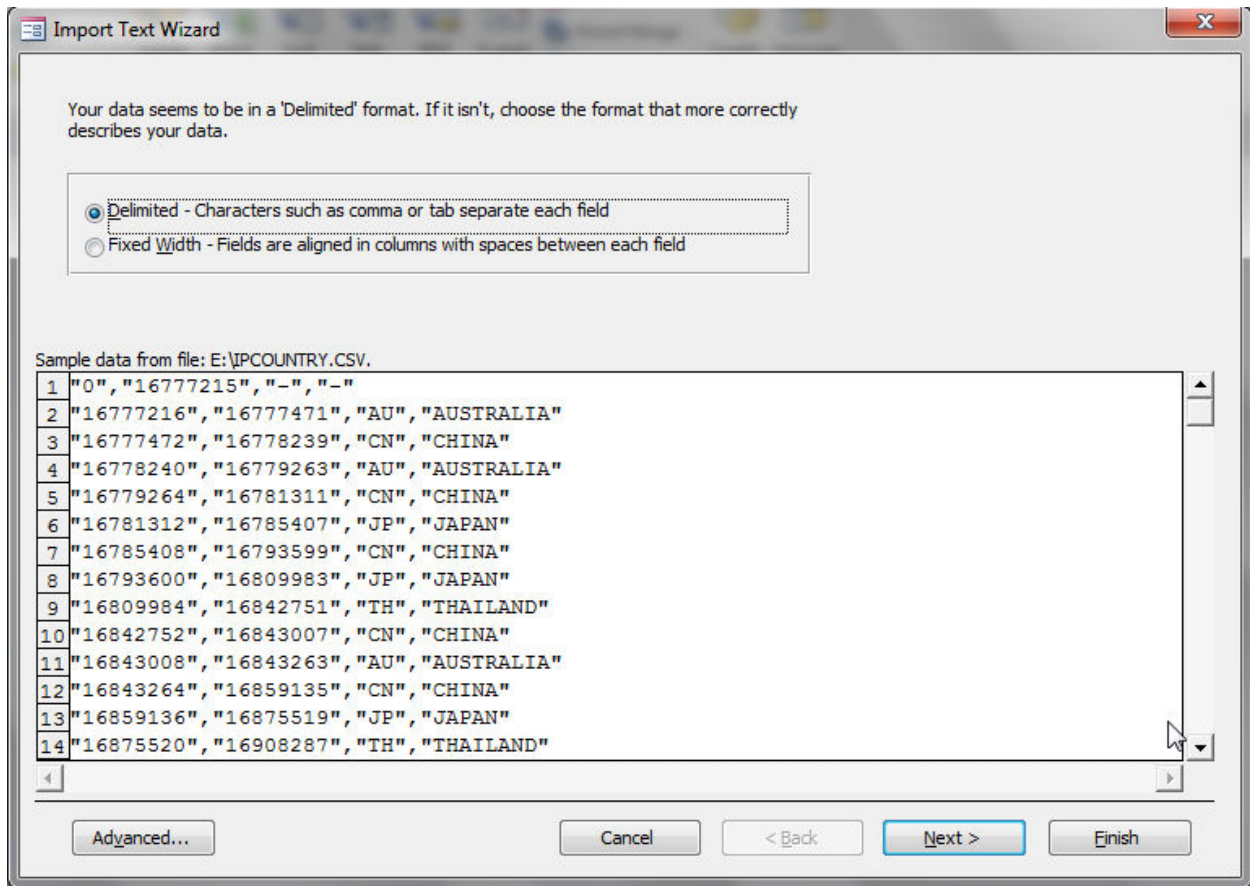
4. The “**Get External Data**” window will be shown. From the window, select the CSV file (for example, IPCountry.csv) by clicking the “**Browse...**” button.



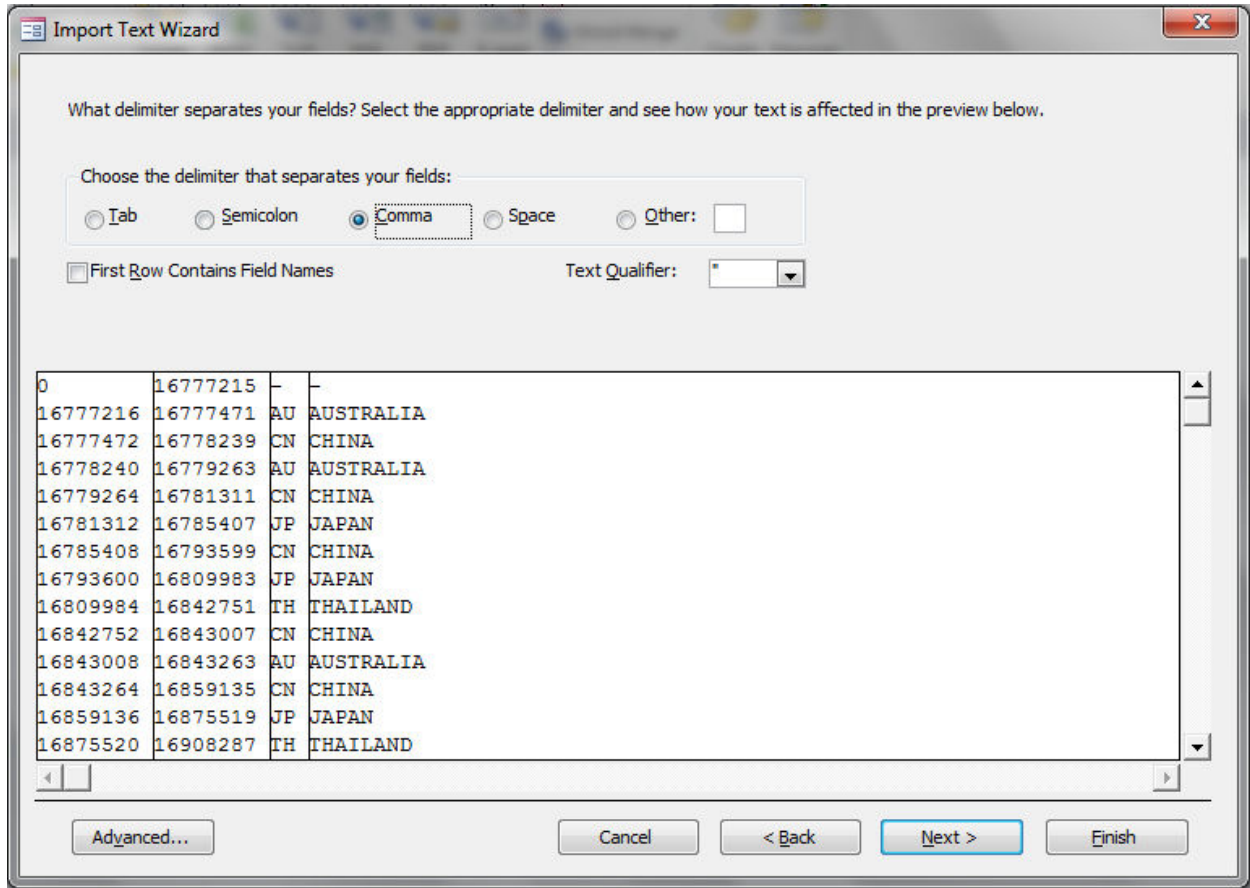
5. Make sure you select the option **“Append a copy of the records to the table”** and select the **IPCountry** entry.

Notes: This step will append the record into existing table, therefore please make sure the table was empty before running this step.

6. Click on **OK** button.
7. Leave the default settings as followed, and click on **“Next >”** button.



8. Leave the default settings as followed, and click on **“Finish”** button.



9. Done

Notes: We use Microsoft Access 2010 to demonstrate the step-by-step guideline. Some variants in screen capture and step may be observed for other Access version.

How to import IPCountry.csv into MDB (Using ASP)

Below is the code snippet of how to import the IP-Country.csv file into MDB

```
<%
'The directory where CSV file stored
Set csv = Server.CreateObject("ADODB.Connection")
csv.Open "Provider=Microsoft.Jet.OLEDB.4.0;" & _
        "Data Source=" & Server.MapPath("./") & ";" & _
        "Extended Properties=""text;HDR=No;FMT=Delimited""

'The directory where MDB file stored
Set acc = Server.CreateObject("ADODB.Connection")
acc.Open "Provider=Microsoft.Jet.OLEDB.4.0;" & _
        "Data Source=" & Server.MapPath("./data/IPCountry.mdb") & ";"

'Purge all records before import
acc.Execute("DELETE FROM IPCountry")

'Open destination table
Set accRS = Server.CreateObject("ADODB.RecordSet")
accRS.Open "IPCountry", acc, 3, 3 ' adOpenStatic, adLockOptimistic

'Loop the CSV record and import into MDB
Set csvRS = csv.Execute("SELECT * FROM IPCountry.csv")
Do Until csvRS.EOF
    accRS.AddNew
    accRS("ipFROM") = csvRS(0)
    accRS("ipTO") = csvRS(1)
    accRS("countrySHORT") = csvRS(2)
    accRS("countryLONG") = csvRS(3)
    accRS.Update
    csvRS.MoveNext
Loop

'Close all connection
accRS.Close
csvRS.Close
csv.Close
acc.Close
%>
```

Table Structure

Table Name: IPCountry

Field Name	Data Type	Field Size
ipFROM	Number	Double
ipTO	Number	Double
countrySHORT	Text	255
countryLONG	Text	255